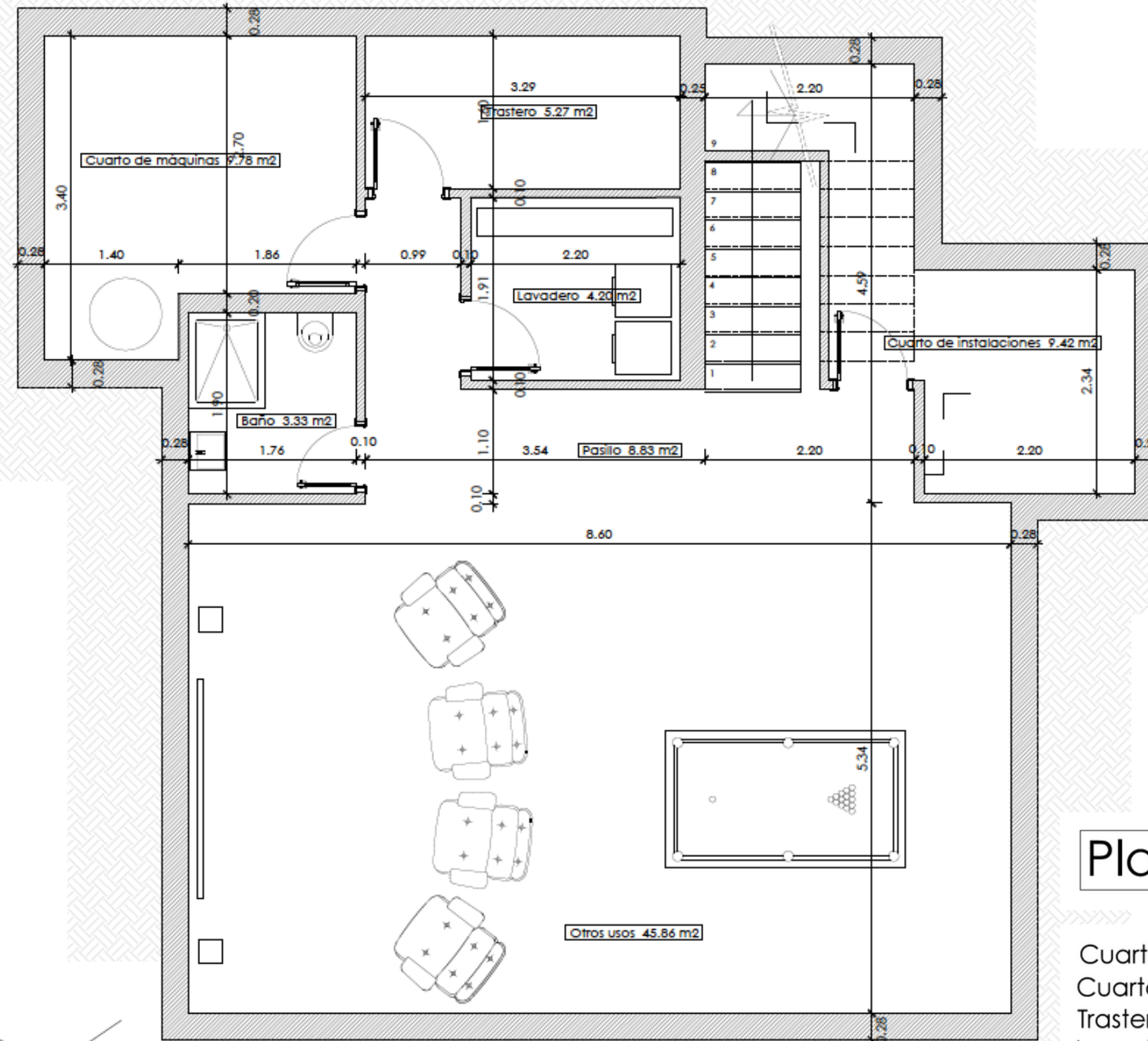


VILLA TYPE B BASEMENT



Planta sótano

Cuarto de máquinas	7.31 m ²
Cuarto de instalaciones	8.68 m ²
Trastero	5.35 m ²
Lavadero	4.28 m ²
Baño	3.22 m ²
Otros usos	43.84 m ²
Pasillo	8.97 m ²

Sup. util	81.65 m ²
Sup. cons.	98.78 m ²



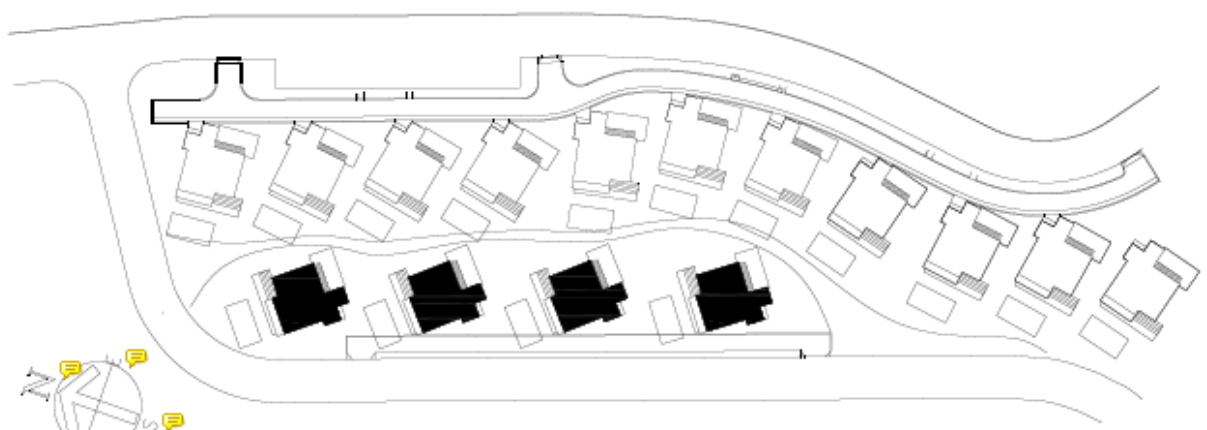
Key plan

VILLA TYPE B GROUND FLOOR



Planta Baja

Terraza	38.47 m ²
Terraza cubierta	11.34 m ²
Estar / comedor / cocina	55.22 m ²
Hall	4.00 m ²
Dormitorio 3	12.14 m ²
Baño	4.64 m ²
Pasillo	1.80 m ²
Sup. util	77.80 m²
Sup. const.	104.91 m²

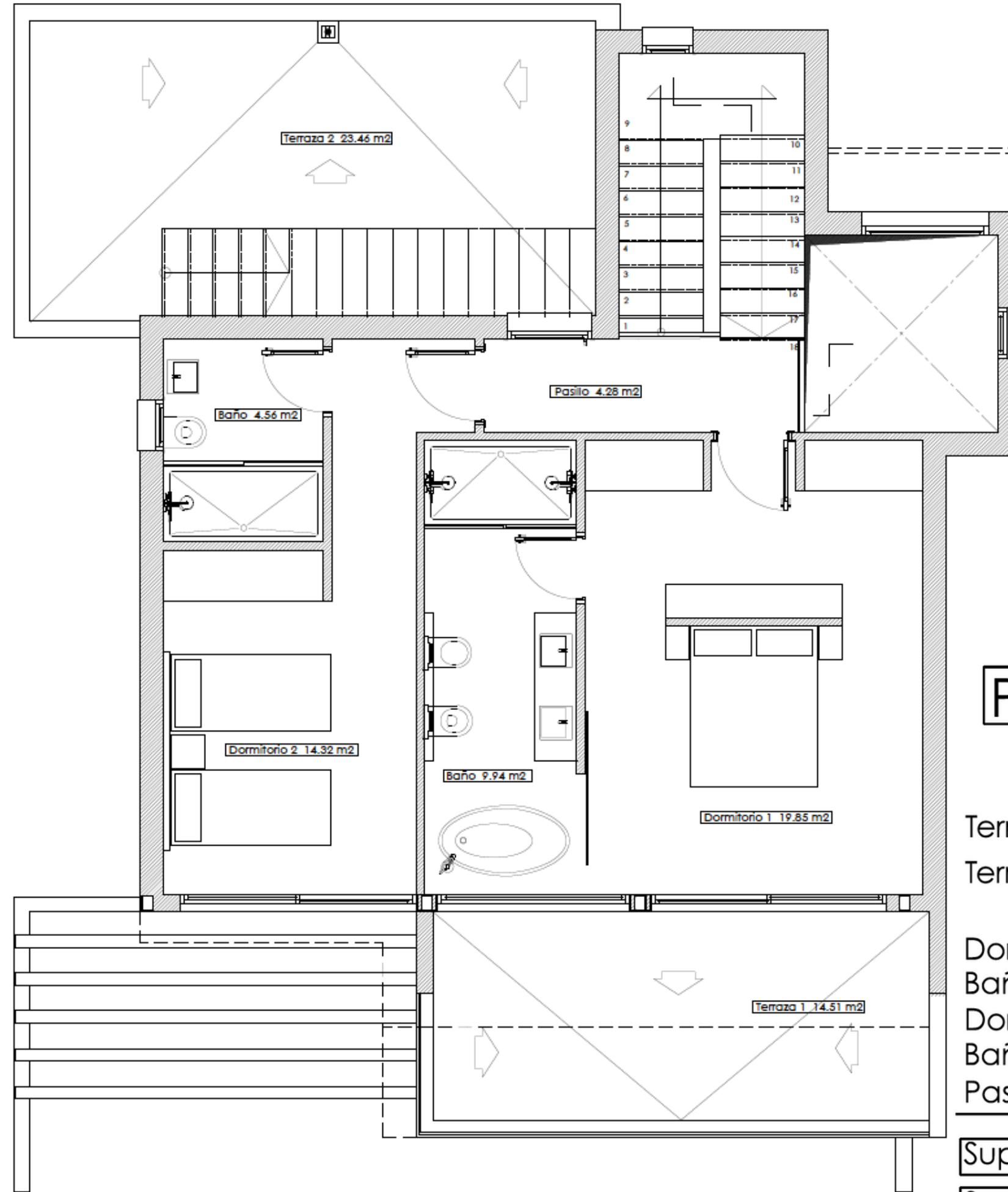


Key plan



VILLA TYPE B

1st FLOOR



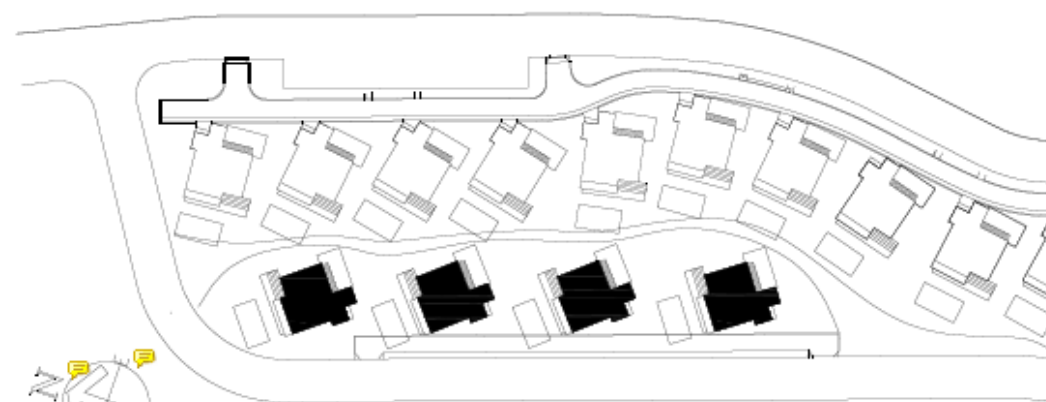
Planta 1°

Terraza 1	10.57 m ²
Terraza 2	21.08 m ²

Dormitorio 1	19.05 m ²
Baño	9.57 m ²
Dormitorio 2	13.82 m ²
Baño	4.64 m ²
Pasillo	4.28 m ²

Sup. util	51.36 m ²
-----------	----------------------

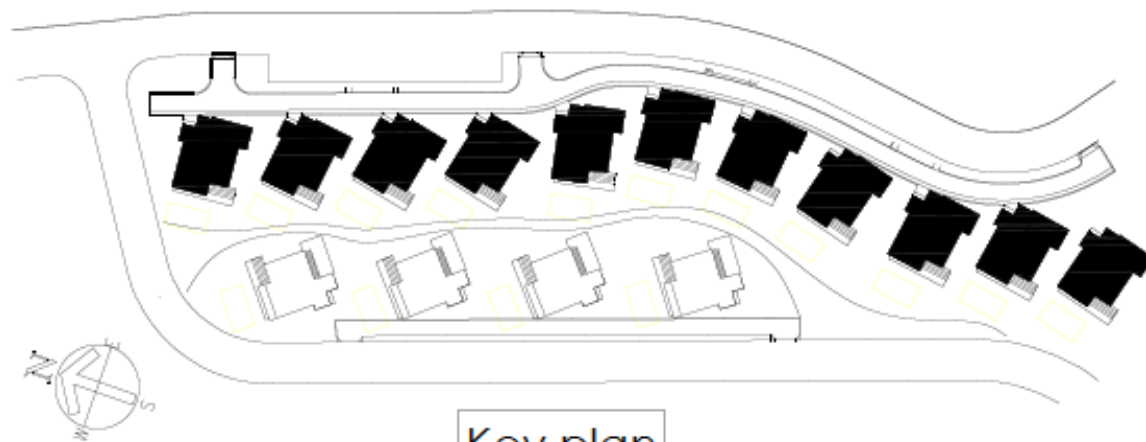
Sup. const.	73.82 m ²
-------------	----------------------



Key plan

VILLA TYPE B

TERRACE SOLARIUM



Key plan

